

Mounting boxes (command boxes)

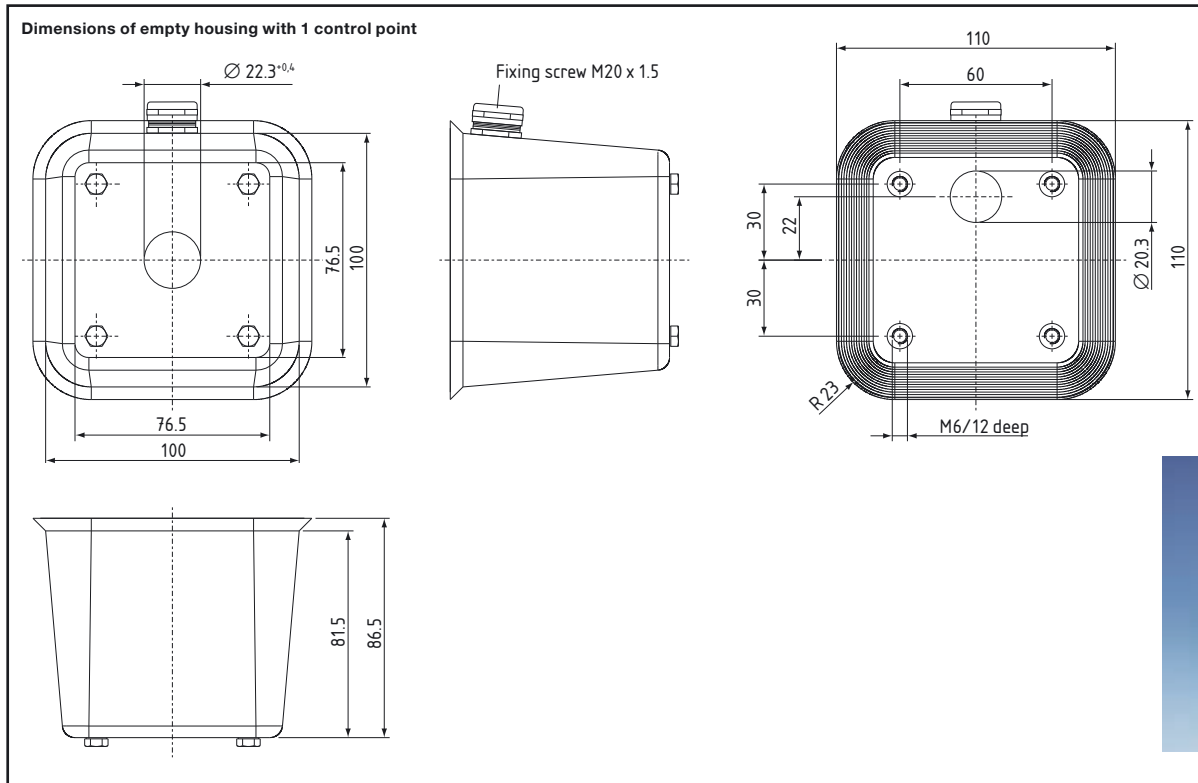
Dimensions	64
Design	66
Option	62
Technical data	67
Product range	67



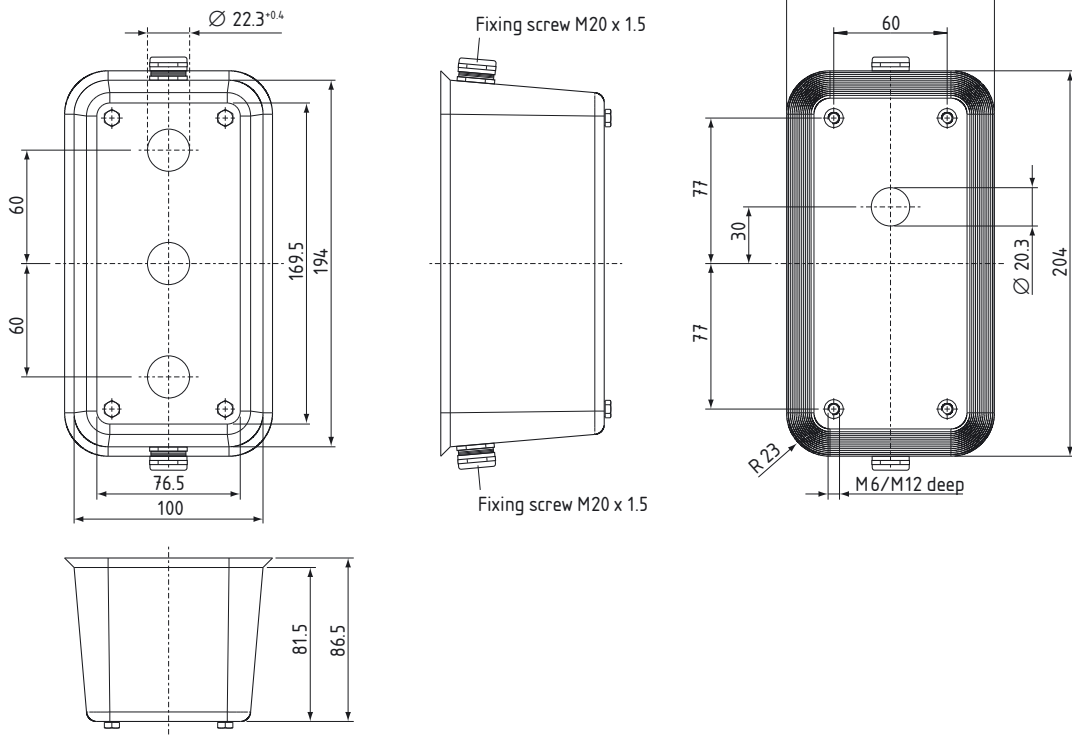
Mounting boxes (command boxes)



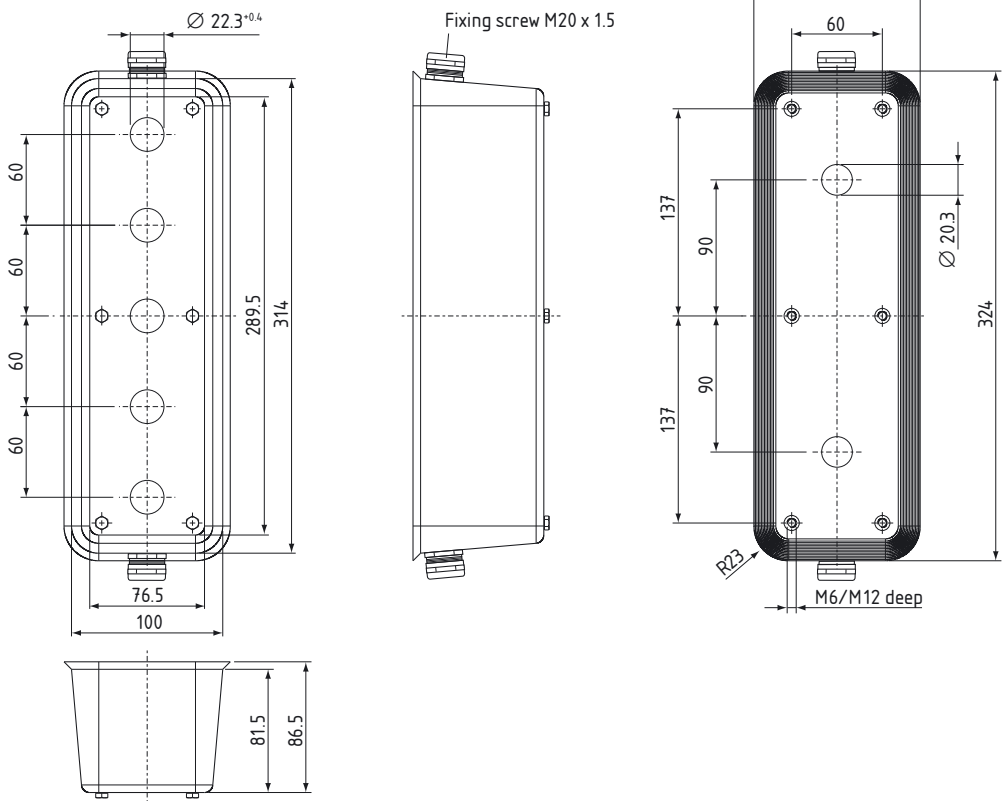
- Empty housing made of V4A material
- Design under consideration of EN 1672-2 and ISO 14159
- Versions for 1, 3 and 5 control points for installation diameter 22.3 mm
- Equipped versions: on request



Dimensions of empty housing with 3 control points



Dimensions of empty housing with 5 control points



Mounting boxes (command boxes) (continued)

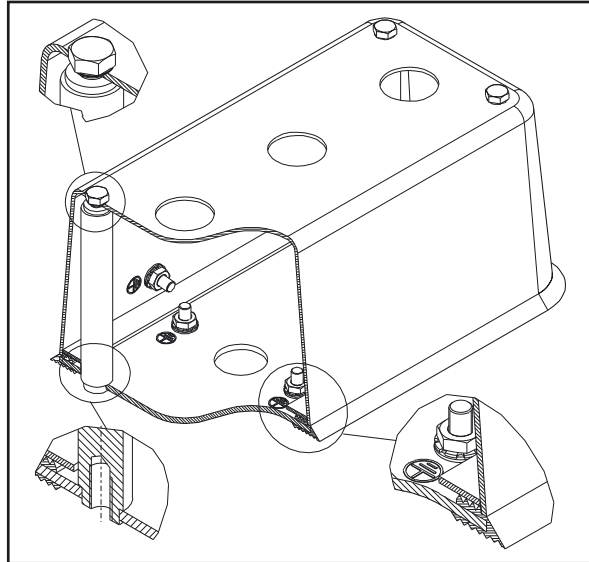
Design

The mounting boxes (control boxes) of the type series NBG (for food processing machines and MBG...O for heavy-duty applications and similar) consist of a housing top part made of V4A material produced using a special deep-drawing process and a bottom part. Versions are available as empty housing with bore holes for 1, 3 and 5 control points (installation diameter: 22.3 mm).

The bottom part of the housing (with 2 earthing screws) has a special seal which covers the edges of the top part of the housing (with 1 earthing screw) and all sides of the bottom part of the housing. The seal for the type series NBG is made of food-safe NBR and in the type series MBG...O from UV and ozone-resistant NBR.

The top and bottom parts of the housing are connected by means of V4A hexagonal screws M 5 × 10 (to ISO 4017 or DIN 933). Under hygiene aspects the screws comply with EN 1672-2 and ISO 14159. With respect to tightness, the screw bushing is additionally protected with special washers (PA) and with an inner O ring (similarly made of food-safe NBR).

The housing is fixed via 4 or 6 threaded boreholes – depending on version – M 6/12 deep. The corresponding screws (M 6) are not supplied.



Option (on request)

- Mounting box equipped with control and indicator devices
- Other installation bore holes
- Other cable glands (refer to assembly instructions)

Assembly instructions

In order to guarantee the class of protection IP 67 and IP 69K for the housing the cable entry is provided via the bottom part. For this purpose there is a cable entry with a diameter of 20.3 mm for boxes with 1 and 3 control points for a cable gland M 20 × 1.5 mm and for 5 control points there are 2 × cable entries with a diameter of 20.3 mm.

Depending on circumstances, we recommend a cable gland with an adequate class of protection.

In the case of different cable entries in the top part of the box a cable gland with class of protection IP 65 and IP 67 or IP 69K may be necessary. Whilst cable glands with type of protection IP 65/IP67 are numerous on the market, cable glands with class of protection IP 69K are very rare.

Please remember that a cable entry in the top part of the box is bored at a 90° angle to it and that therefore the cable entry is not flush with the fixing surface.



Technical data

Version	Under consideration of EN 1672-2 and ISO 14 159 largely avoiding corners and edges with radiuses > 6 mm
Type of protection	IP 67 and IP 69K*
Material	NIROSTA 1.4571 (AiSi 316Ti)
Use of the material	Food processing machines, apparatus and components of the chemicals industry, textiles industry, cellulose manufacture, dye works as well as in the photo, paint, artificial resin and rubber industry
Corrosion resistance class	III medium (structures with moderate chloride and sulphur dioxide exposure from industry, traffic and sea water atmosphere; a concentration of pollutants must be avoided)

* In connection with control devices and illuminated pushbuttons of the type series N (or suitable integrated devices) as well as cable glands of the appropriate class of protection or a suitable positioning of the cable gland outside the critical area.

Product range

	Device	Seal	Version	Type	Part no.
Type series NBG for food processing machines	Empty housing with bore holes	grey	for 1 control point	NBG 311	0809500
			for 3 control points	NBG 633	0809510
			for 5 control points	NBG 665	0809520
Type series EBG...O for heavy-duty applications and similar, UV- and ozone-resistant	Empty housing with bore holes	black	for 1 control point	EBG 311.O	0829500
			for 3 control points	EBG 633.O	0829510
			for 5 control points	EBG 665.O	0829520