

Hinge monitoring switches

TESZ series

for 30 mm profiles

Features

- Simple installation to all popular 30 mm aluminium profiles, square tubes and conventional machine cladding.
- Material:
 - Housing: glass-fibre-reinforced thermoplastic, self-extinguishing to UL 94-V-0
 - Hinge: Al Mg Si 0.5 F25
 - Hinge pin: steel 1.4104

Cross references

- General description: refer to page 5
- Contact arrangement selectable: see below
- Calculation door angle/door gap: refer to page 30
- Assembly instructions: refer to page 31
- Technical data: refer to page 32

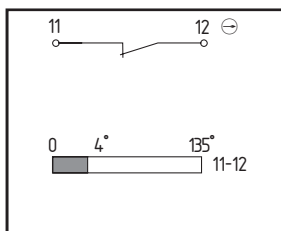
Options (on request)

- Other switching angles: 5°, 8° (standard: 4°)
- With adapter for AS Interface Safety at Work
- Plug connection

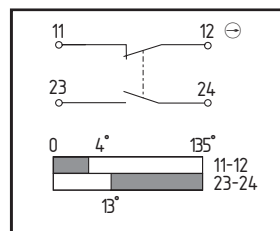


Contact configurations

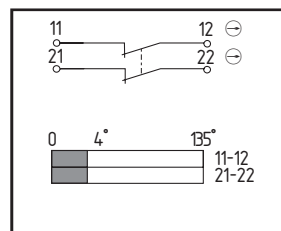
TESZ 10../30



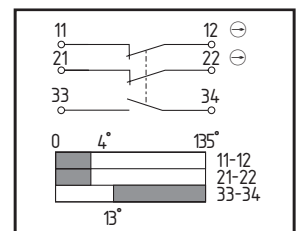
TESZ 102../30



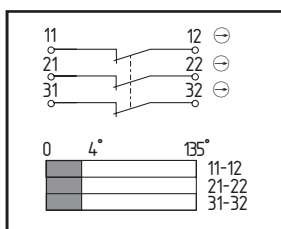
TESZ 110../30



TESZ 1102../30



TESZ 1110../30



Representation of the contacts in non-actuated state (guard closed), switching angle in new state. Tolerance 4°±2.

Test symbol (with respect to the basic design)



BIA 994005

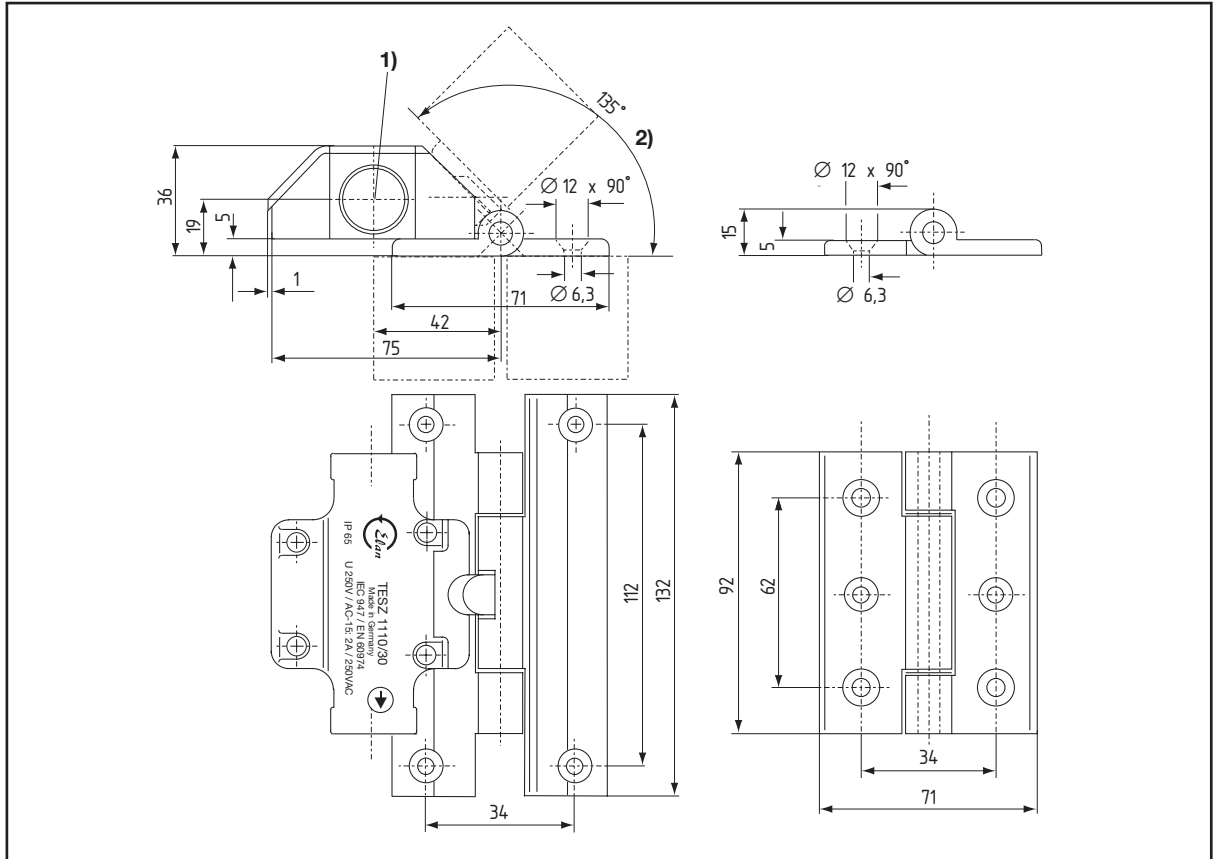
Scope of delivery

Hinge switch with or without additional hinge, fixing material

Product table

Type	Version	Part number
With additional hinge		
TESZ 10/30	1 NC	1348710
TESZ 102/30	1 NC/1 NO	1348713
TESZ 110/30	2 NC	1348722
TESZ 1102/30	2 NC/1 NO	1348716
TESZ 1110/30	3 NC	1348719
Without additional hinge		
TESZ 10/S/30	1 NC	1348711
TESZ 102/S/30	1 NC/1 NO	1348714
TESZ 110/S/30	2 NC	1348723
TESZ 1102/S/30	2 NC/1 NO	1348717
TESZ 1110/S/30	3 NC	1348720
Additional hinge		
TESZ/S/30		1348821

Dimensions TESZ .../30



- 1) Punch-out bore hole M20 x 1.5
- 2) Maximum opening angle 135°

Hinge monitoring switches

TESZ series

for 35 mm profiles

Features

- Simple installation to all popular 35 mm aluminium profiles, square tubes and conventional machine cladding.
- Material:
 - Housing: glass-fibre-reinforced thermoplastic, self-extinguishing to UL 94-V-0
 - Hinge: Al Mg Si 0.5 F25
 - Hinge pin: steel 1.4104

Cross references

- General description: refer to page 5
- Contact arrangement selectable: see below
- Calculation door angle/door gap: refer to page 30
- Assembly instructions: refer to page 31
- Technical data: refer to page 32

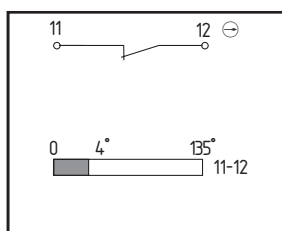
Options (on request)

- Other switching angles: 5°, 8° (standard: 4°)
- With adapter for AS Interface Safety at Work
- Plug connection

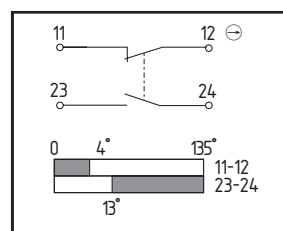


Contact configurations

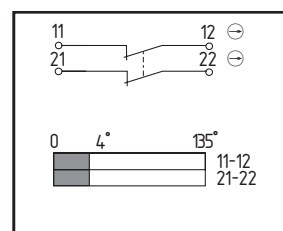
TESZ 10../35



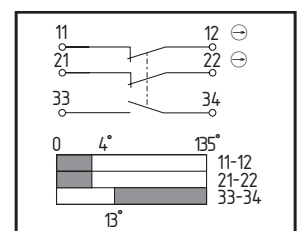
TESZ 102../35



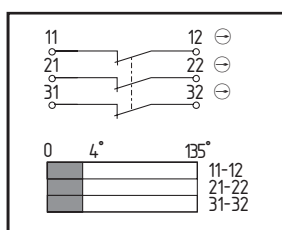
TESZ 110../35



TESZ 1102../35



TESZ 1110../35



Representation of the contacts in non-actuated state (guard closed), switching angle in new state. Tolerance 4°±2.

Test symbol (with respect to the basic design)

BIA 994006

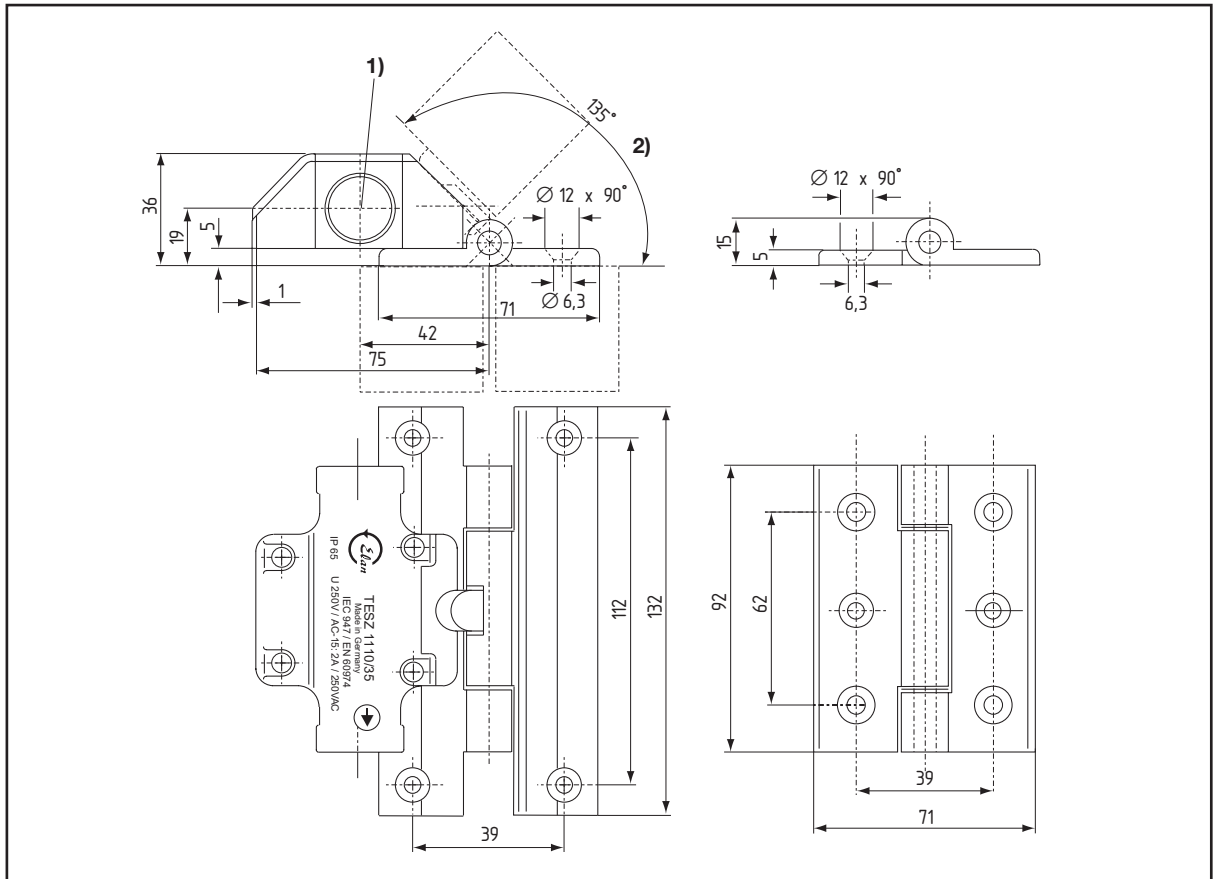
Scope of delivery

Hinge switch with or without additional hinge, fixing material

Product table

Type	Version	Part number
With additional hinge		
TESZ 10/35	1 NC	1348730
TESZ 102/35	1 NC/1 NO	1348733
TESZ 110/35	2 NC	1348742
TESZ 1102/35	2 NC/1 NO	1348736
TESZ 1110/35	3 NC	1348739
Without additional hinge		
TESZ 10/S/35	1 NC	1348731
TESZ 102/S/35	1 NC/1 NO	1348734
TESZ 110/S/35	2 NC	1348743
TESZ 1102/S/35	2 NC/1 NO	1348737
TESZ 1110/S/35	3 NC	1348740
Additional hinge		
TESZ/S/35		1348822

Dimensions TESZ .../35



- 1) Punch-out bore hole M20 x 1.5
- 2) Maximum opening angle 135°

Hinge monitoring switches

TESZ series

for 40 mm profiles

Features

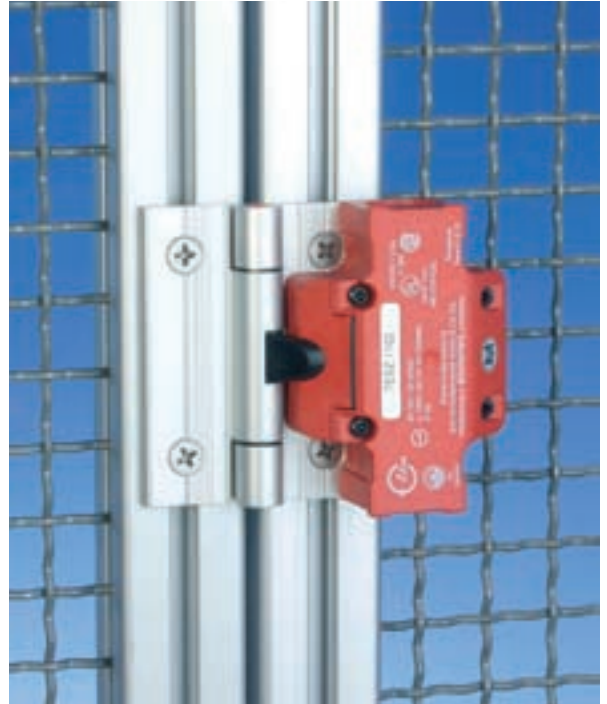
- Simple installation to all popular 40 mm aluminium profiles, square tubes and conventional machine cladding.
- Material:
 - Housing: glass-fibre-reinforced thermoplastic, self-extinguishing to UL 94-V-0
 - Hinge: Al Mg Si 0.5 F25
 - Hinge pin: steel 1.4104

Cross references

- General description: refer to page 5
- Contact arrangement selectable: see below
- Calculation door angle/door gap: refer to page 30
- Assembly instructions: refer to page 31
- Technical data: refer to page 32

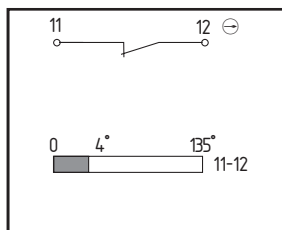
Options (on request)

- Other switching angles: 5°, 8° (standard: 4°)
- With adapter for AS Interface Safety at Work
- Plug connection

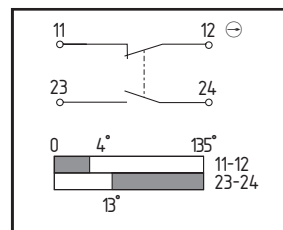


Contact configurations

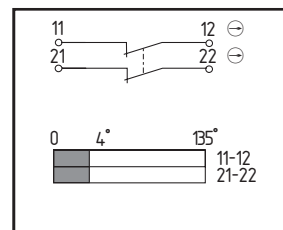
TESZ 10..



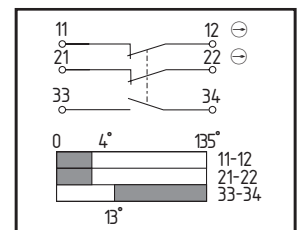
TESZ 102..



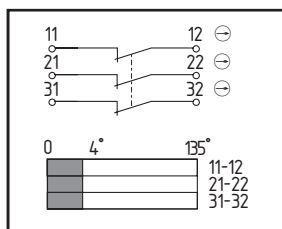
TESZ 110..



TESZ 1102..



TESZ 1110..



Representation of the contacts in non-actuated state (guard closed), switching angle in new state. Tolerance 4°±2.

Test symbol (with respect to the basic design)



BIA 994006

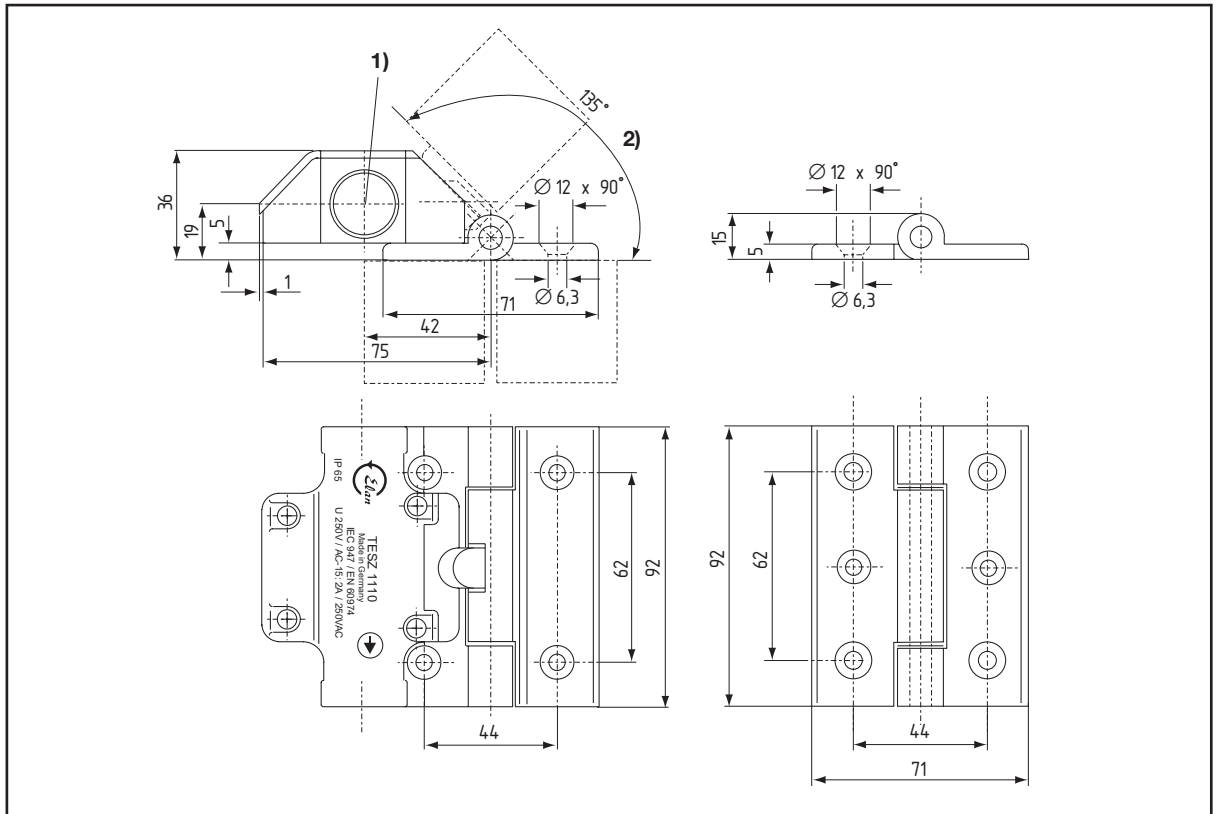
Scope of delivery

Hinge switch with or without additional hinge, fixing material

Product table

Type	Version	Part number
With additional hinge		
TESZ 10	1 NC	1348760
TESZ 102	1 NC/1 NO	1348764
TESZ 110	2 NC	1348776
TESZ 1102	2 NC/1 NO	1348768
TESZ 1110	3 NC	1348772
Without additional hinge		
TESZ 10/S	1 NC	1348761
TESZ 102/S	1 NC/1 NO	1348765
TESZ 110/S	2 NC	1348777
TESZ 1102/S	2 NC/1 NO	1348769
TESZ 1110/S	3 NC	1348773
Additional hinge		
TES/S		1348819

Dimensions TESZ ...



1) Punch-out bore hole M20 x 1,5

2) Maximum opening angle 135°

Hinge monitoring switches

TESZ series

for 45 mm profiles

Features

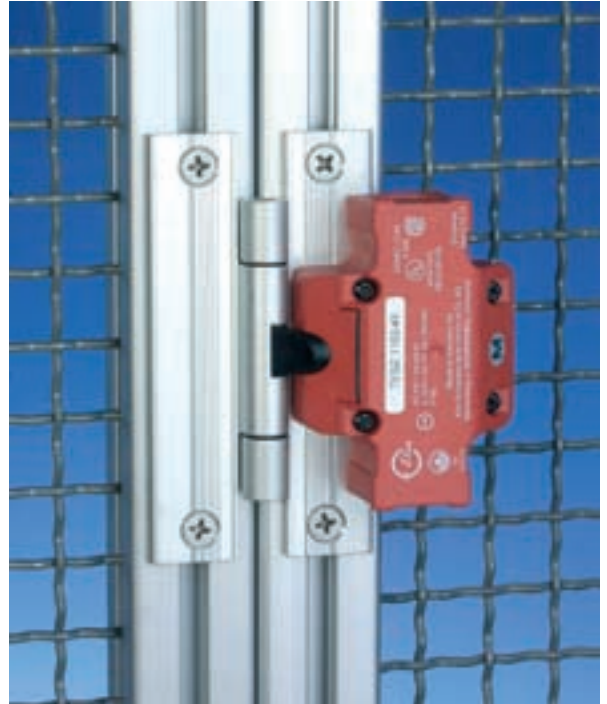
- Simple installation to all popular 45 mm aluminium profiles, square tubes and conventional machine cladding.
- Material:
 - Housing: glass-fibre-reinforced thermoplastic, self-extinguishing to UL 94-V-0
 - Hinge: Al Mg Si 0.5 F25
 - Hinge pin: steel 1.4104

Cross references

- General description: refer to page 5
- Contact arrangement selectable: see below
- Calculation door angle/door gap: refer to page 30
- Assembly instructions: refer to page 31
- Technical data: refer to page 32

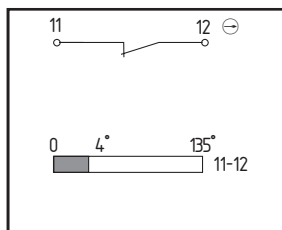
Options (on request)

- Other switching angles: 5°, 8° (standard: 4°)
- With adapter for AS Interface Safety at Work
- Plug connection

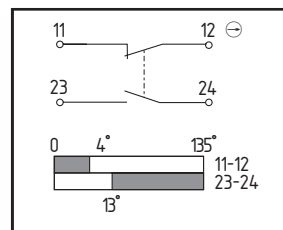


Contact configurations

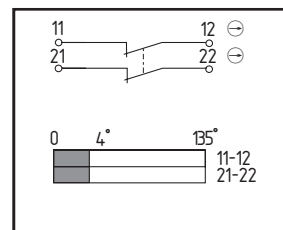
TESZ 10../45



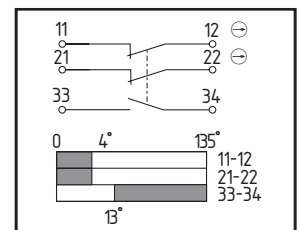
TESZ 102../45



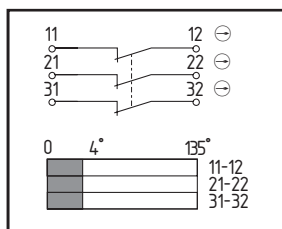
TESZ 110../45



TESZ 1102../45



TESZ 1110../45



Representation of the contacts in non-actuated state (guard closed), switching angle in new state. Tolerance 4°-2.

Test symbol (with respect to the basic design)



BIA 994006

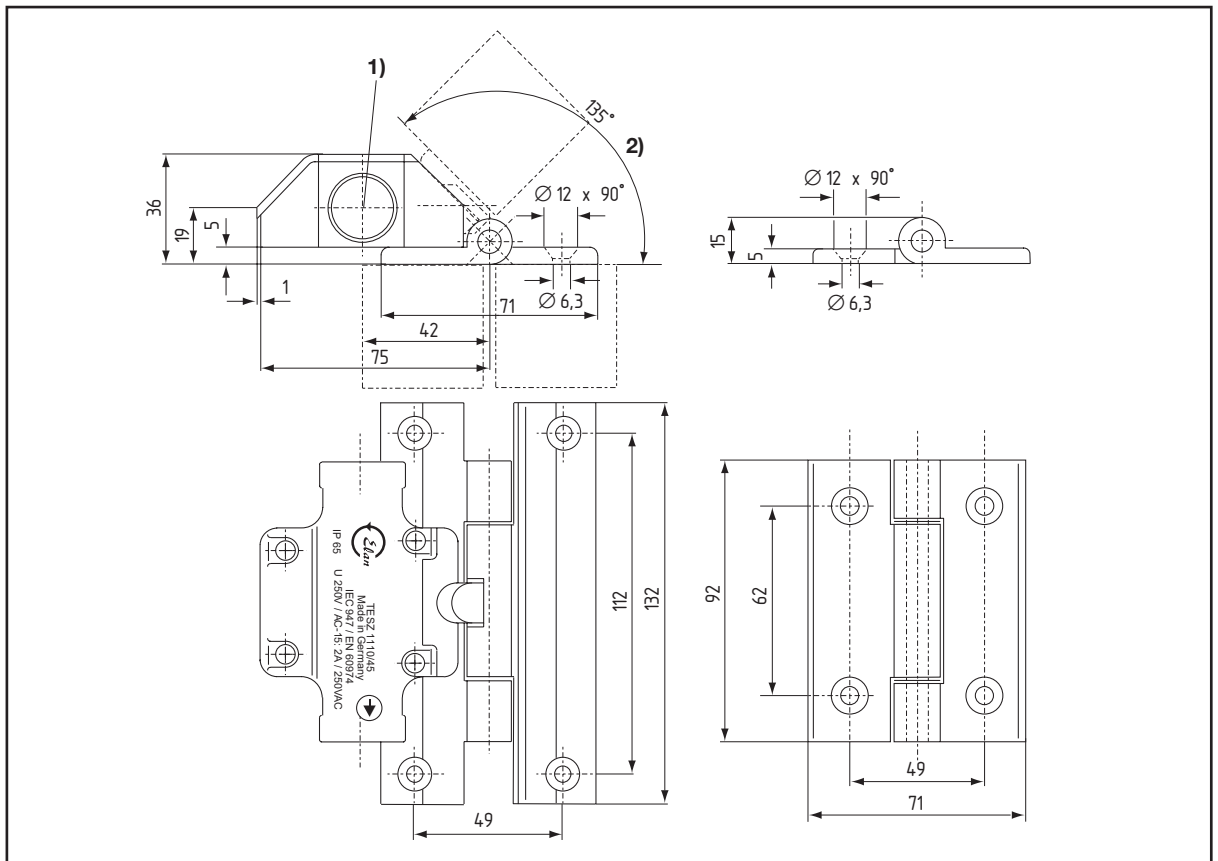
Scope of delivery

Hinge switch with or without additional hinge, fixing material

Product table

Type	Version	Part number
With additional hinge		
TESZ 10/45	1 NC	1348600
TESZ 102/45	1 NC/1 NO	1348601
TESZ 110/45	2 NC	1348602
TESZ 1102/45	2 NC/1 NO	1348603
TESZ 1110/45	3 NC	1348604
Without additional hinge		
TESZ 10/S/45	1 NC	1348610
TESZ 102/S/45	1 NC/1 NO	1348611
TESZ 110/S/45	2 NC	1348612
TESZ 1102/S/45	2 NC/1 NO	1348613
TESZ 1110/S/45	3 NC	1348614
Additional hinge		
TESZ/S/45		1348818

Dimensions TESZ .../45



- 1) Punch-out bore hole M20 x 1.5
- 2) Maximum opening angle 135°

Hinge monitoring switches

TESZR series

for 40 mm profiles with restart inhibit

Features

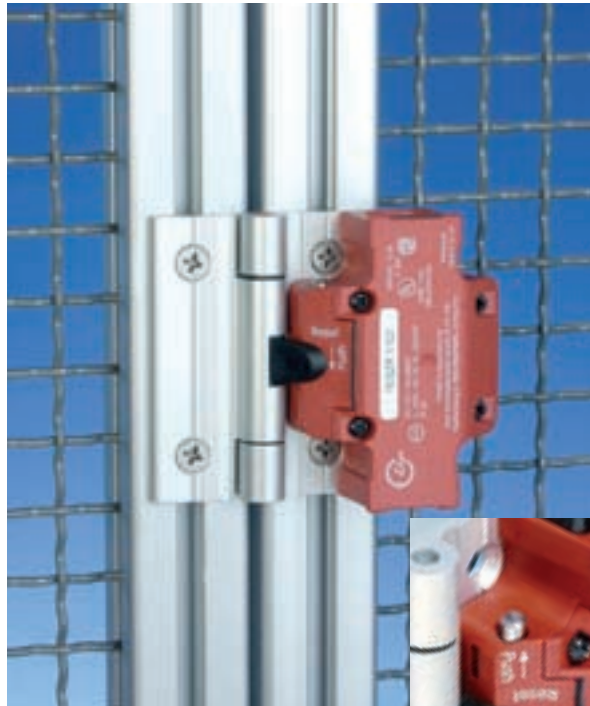
- Simple installation to all popular 40 mm aluminium profiles, square tubes and conventional machine cladding.
- With restart inhibit
- Material:
 - Housing: glass-fibre-reinforced thermoplastic, self-extinguishing to UL 94-V-0
 - Hinge: Al Mg Si 0.5 F25
 - Hinge pin: steel 1.4104

Cross references

- General description: refer to page 5
- Contact arrangement selectable: see below
- Calculation door angle/door gap: refer to page 30
- Assembly instructions: refer to page 31
- Technical data: refer to page 32

Options (on request)

- Other switching angles: 5°, 8° (standard: 4°)
- Other hinge versions
- With adapter for AS Interface Safety at Work
- Plug connection



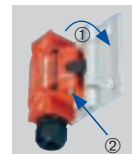
Restart inhibit

The restart inhibit prevents an unintentional restart of the hazardous movement when the guard is closed. Reset by pressing a restart button.



Picture to the left: The restart inhibit latches in when the guard is opened; safety contacts are open.

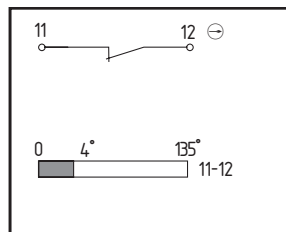
Picture to the right: After closing (1) the guard the safety contacts are held in open state by the restart inhibit. Only once the reset button (2) is pressed do the safety contacts close again.



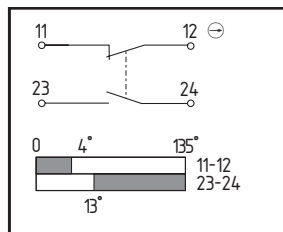
Attention: If reset of restart inhibit is used exclusively to initiate dangerous movements, switch must be replaced after max. 100,000 switching cycles.

Contact configurations

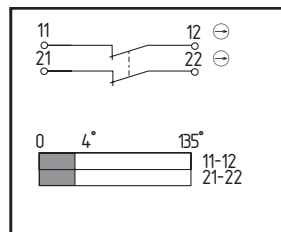
TESZR 10..



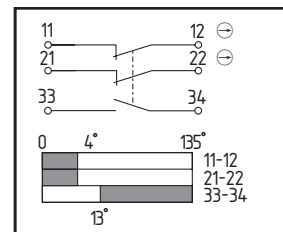
TESZR 102..



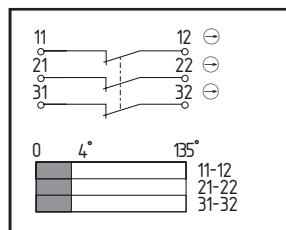
TESZR 110..



TESZR 1102..



TESZR 1110..



Representation of the contacts in non-actuated state (guard closed), switching angle in new state. Tolerance 4°-2.

Test symbol (with respect to the basic design)



in preparation

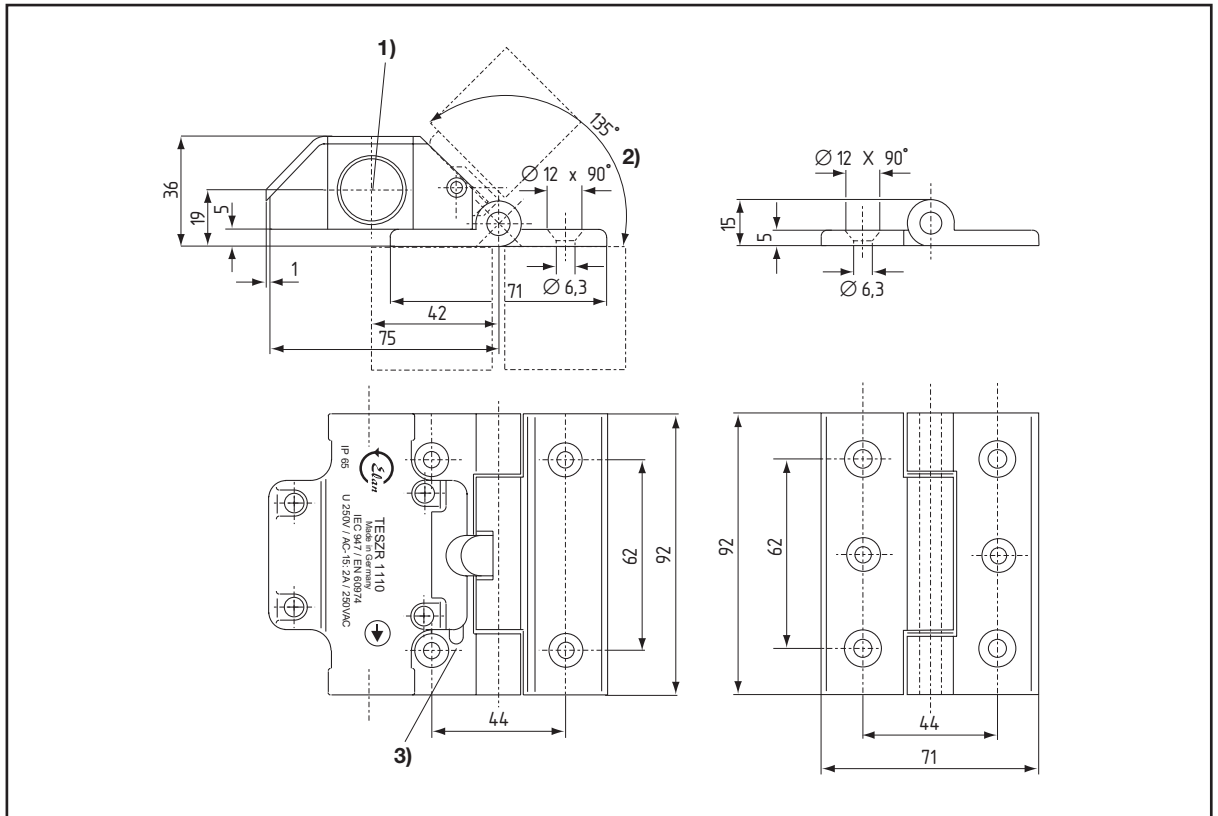
Scope of delivery

Hinge switch with or without additional hinge, fixing material

Product table

Type	Version	Part number
With additional hinge		
TESZR 10	1 NC	1348660
TESZR 102	1 NC/1 NO	1348665
TESZR 110	2 NC	1348670
TESZR 1102	2 NC/1 NO	1348675
TESZR 1110	3 NC	1348680
Without additional hinge		
TESZR 10/S	1 NC	1348661
TESZR 102/S	1 NC/1 NO	1348666
TESZR 110/S	2 NC	1348671
TESZR 1102/S	2 NC/1 NO	1348676
TESZR 1110/S	3 NC	1348681
Additional hinge		
TES/S		1348819

Dimensions TESZR ...



- 1) Punch-out bore hole M20 x 1.5
- 2) Maximum opening angle 135°
- 3) Reset button

Hinge monitoring switches

TESZX series

with stainless steel hinge

Features

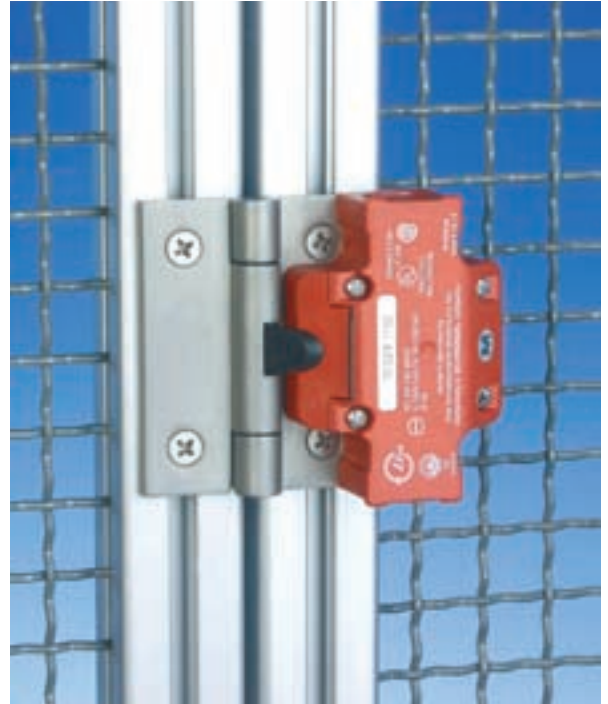
- Simple installation to all popular 40 mm aluminium profiles, square tubes and conventional machine cladding.
- Housing: glass-fibre-reinforced thermoplastic, self-extinguishing to UL 94-V-0
- All outside metallic parts are made of stainless steel:
 - Hinge 1.4404
 - Hinge pin 1.4301
 - Bolts, nuts and washers 1.4303

Cross references

- General description: refer to page 5
- Contact arrangement selectable: see below
- Calculation door angle/door gap: refer to page 30
- Assembly instructions: refer to page 31
- Technical data: refer to page 32

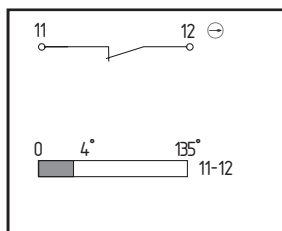
Options (on request)

- Other switching angles: 5°, 8° (standard: 4°)
- With restart inhibit
- With adapter for AS Interface Safety at Work
- Plug connection

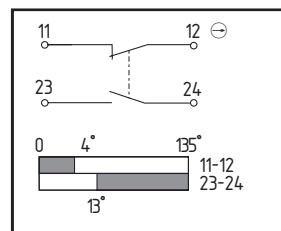


Contact configurations

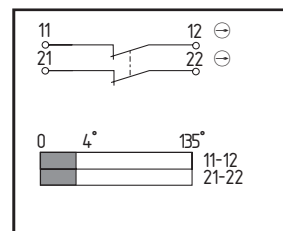
TESZX 10..



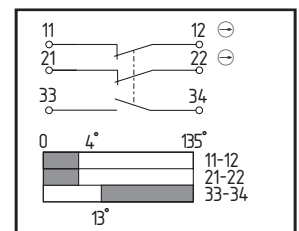
TESZX 102..



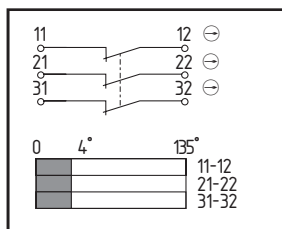
TESZX 110..



TESZX 1102..



TESZX 1110..



Representation of the contacts in non-actuated state (guard closed), switching angle in new state. Tolerance 4°-2.

Test symbol (with respect to the basic design)



BIA 994006

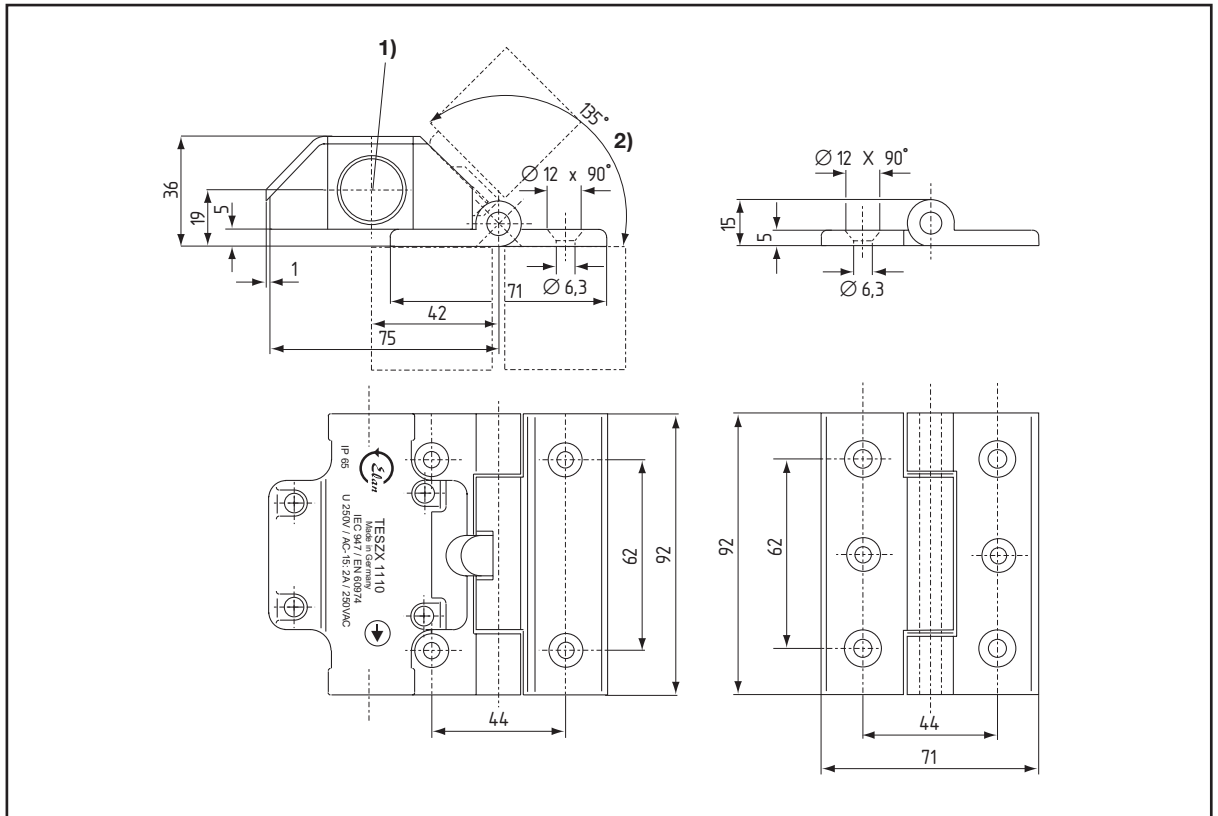
Scope of delivery

Hinge switch with or without additional hinge, fixing material

Product table

Type	Version	Part number
With additional hinge		
TESZX 10	1 NC	134 8620
TESZX 102	1 NC/1 NO	134 8621
TESZX 110	2 NC	134 8622
TESZX 1102	2 NC/1 NO	134 8623
TESZX 1110	3 NC	134 8624
Without additional hinge		
TESZX 10/S	1 NC	134 8625
TESZX 102/S	1 NC/1 NO	134 8626
TESZX 110/S	2 NC	134 8627
TESZX 1102/S	2 NC/1 NO	134 8628
TESZX 1110/S	3 NC	134 8629
Additional hinge		
TESZX/S		134 8690

Dimensions TESZX ...



- 1) Punch-out bore hole M20 x 1.5
- 2) Maximum opening angle 135°