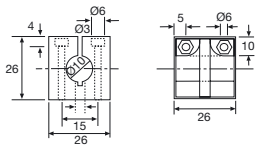


MOUNTING BRACKETS

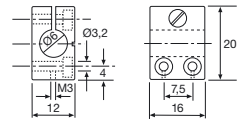
TR 10S

Screw clamp.
Size: Ø 10.
Material: Polycarbonate.



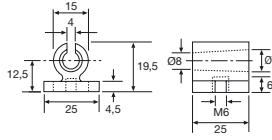
TR 6M

Screw clamp.
Size: Ø 6.
Material: Brass.



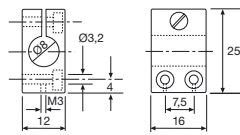
TR 10KB

Mounting clip.
Size: Ø 10.
Material: Polycarbonate.



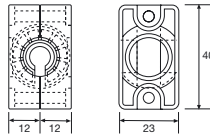
TR 8M

Screw clamp.
Size: Ø 8.
Material: Brass.



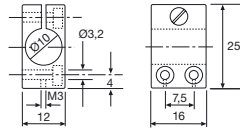
TR 10KG

Mounting Bracket
(40° swivel).
Size: Ø 10.
Material: Polycarbonate.



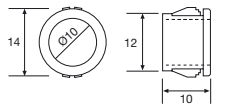
TR 10M

Screw clamp.
Size: Ø 10.
Material: Brass.



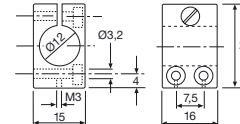
TR 10SB

Snap bushing.
Size: Ø 10.
Material: Polycarbonate.



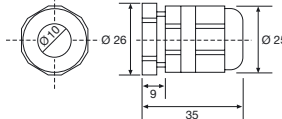
TR 12M

Screw clamp.
Size: Ø 12.
Material: Brass.



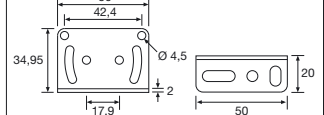
TR 10PG

Mounting nut.
Size: Ø 10.
Material: Polycarbonate.



TR SP35-50 L

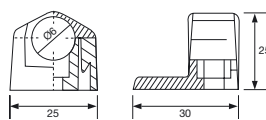
Mounting Bracket.
Size: 50 x 50.
Material: Stainless Steel.
2 x M4 hardware included.



(Units in mm)

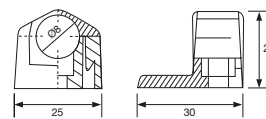
TRN 6

Mounting Bracket.
Size: Ø 6.
Material: Polycarbonate.



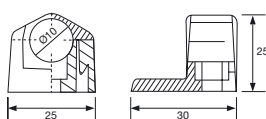
TRN 8

Mounting Bracket.
Size: Ø 8.
Material: Polycarbonate.



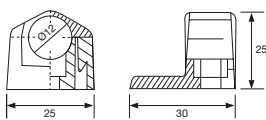
TRN 10

Mounting Bracket.
Size: Ø 10.
Material: Polycarbonate.



TRN 12

Mounting Bracket.
Size: Ø 12.
Material: Polycarbonate.



TRN 18

Mounting Bracket.
Size: Ø 18.
Material: Polycarbonate.

